



Hillrom™



TS7500 Surgical Table Platform with floor-mounted column and MR Conditional\* MR Neuro Tabletop.

# MR NEURO OR TABLETOP FOR IMRIS® SURGICAL THEATRE

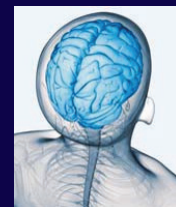
## SPECIALTY OR TABLETOP FOR NEUROSURGERY WITH TS7500 OR TABLE

### Enhanced Workflow for IMRIS Surgical Theatre

Support complex neurosurgery with Hillrom's MR Neuro OR Tabletop.

- Optimal surgical site access due to individual two-segmented tabletop.
- Anatomical adjusted head positioning with special head fixation devices.
- Ideal intraoperative imaging access due to lean design.
- Enhanced flexibility with interchangeable tabletops and the TS7500 Surgical Table Platform.

*\*MR conditions are described in the MR Neuro Tabletop IFU.*



**APPLICATION:  
NEUROSURGERY**



## PRECISE & FLEXIBLE



### OPTIMAL INTRAOPERATIVE ACCESS

Adaptable Head Fixation Devices (HFD) 100/200 by IMRIS for flexible head positioning.



### ENHANCED WORKFLOW

TS7500 MR Neuro OR Table and IMRIS® iMRI System are ideally harmonized in scanning.



### CUSTOMIZED WORKFLOW

Enhance patient safety and increase workflow with scanning position memorization.



### GENERAL TO SPECIALTY

Transform your OR to accommodate multiple specialties with one single column for the TS7500 OR Table and a wide range of tabletops.

## TECHNICAL DETAILS

Material No.	MR Neuro OR Tabletop: EU # 2064887   US # 2064888   JP # 2064889
Dimensions of Tabletop (L x W)	2631 mm x 515 mm (tabletop not extended and width at back section with siderails)
Height Range including Tabletop	758 mm - 1308 mm   29.8" - 51.5"
Longitudinal Slide	472 mm   18.6"
Trendelenburg / Reverse Trendelenburg	± 45°
Tilt	± 30°
Maximum Load	Patient Weight: 180 kg   397 lbs Fixed Side Rail: 50 Nm   Clipped Side Rail: 25 Nm

For more information, please contact your local Hillrom representative.

[hillrom.com](http://hillrom.com)

Hillrom  
Amerika Building (7th Floor),  
Hoogoorddreef 15  
1101 BA Amsterdam, The Netherlands

MR Neuro is a component of the following CE registered product: TS 7500 - 4091000

The MR Neuro Tabletop is intended to be used by clinicians and medically qualified personnel. This medical device is a regulated healthcare product which, pursuant to such regulation bears a CE mark. Hill-Rom recommends that you carefully read the detailed instructions for safe and proper use included in the documents accompanying the medical devices. The personnel of healthcare establishments are responsible for the proper use and maintenance of these medical devices. Hill-Rom reserves the right to make changes without notice in design, specifications and models. The only warranty Hill-Rom makes is the express written warranty extended on the sale or rental of its products. TRUMPF Medizin Systeme GmbH + Co. KG is a subsidiary of Hill-Rom Holdings, Inc.